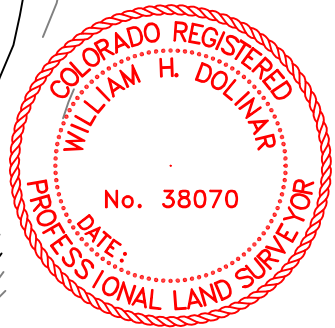
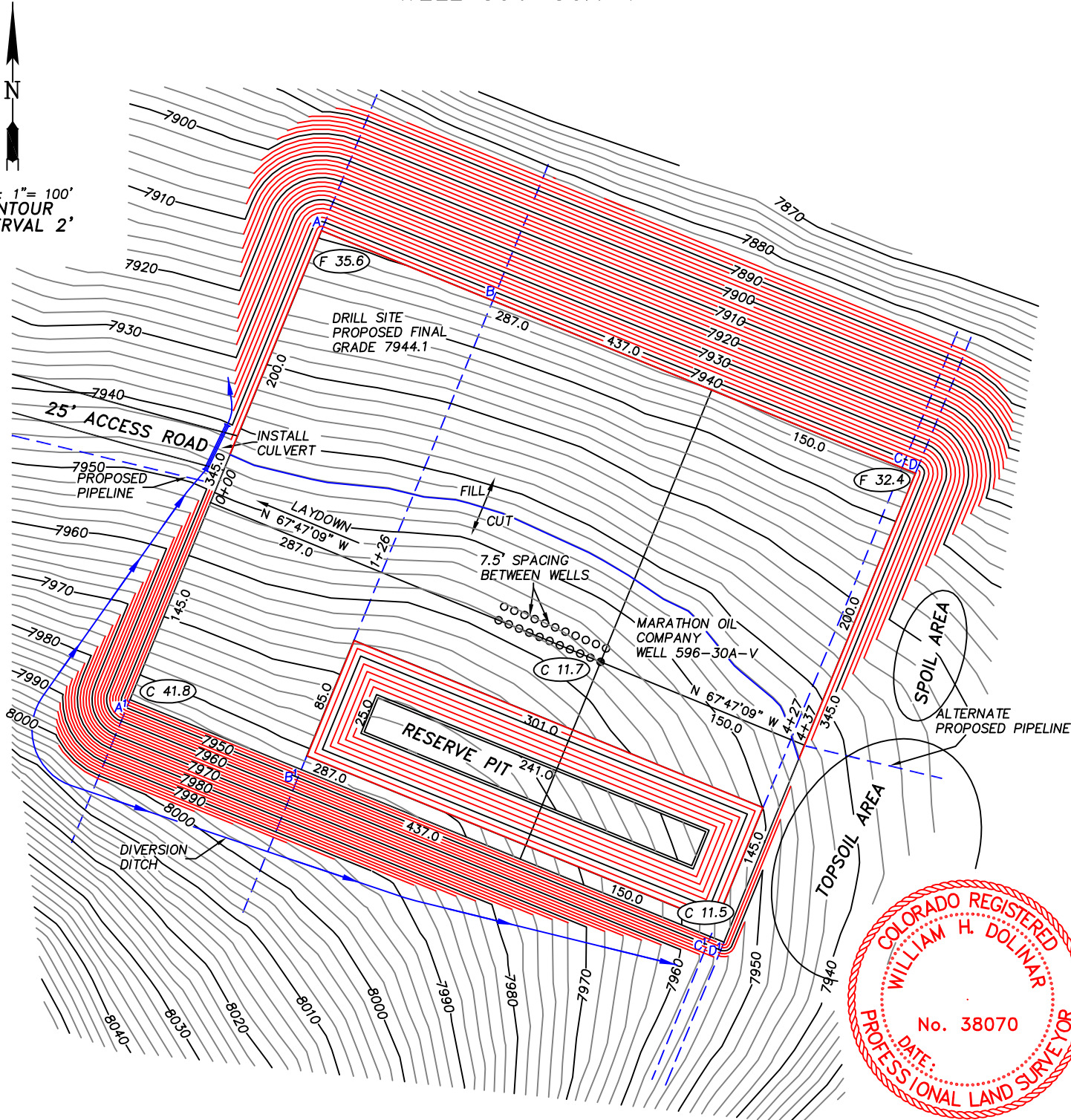


WILLIAM H. SMITH & ASSOCIATES P.C.
 SURVEYING CONSULTANTS
 MARATHON OIL COMPANY
 WELL 596-30A-V

P.O. BOX 820
 GREEN RIVER, WYOMING 82935

550 EAST 2ND NORTH
 PH. 307-875-3638
 FAX. 307-875-3640



RESERVE PIT SIZE
 301' X 85' X 15'
 SLOPE = 2:1

RESERVE PIT CAPACITY
 40,607 BBLs FULL
 32,039 BBLs WORKING
 CAPACITY WITH 2' FREE BOARD

JOB NO. 26099
 07/13/2008 WHD
 PAD 596-30A/PAD 596-30A.DWG

CUT SLOPES: 1:1
 FILL SLOPES: 1.5:1
 QUANTITIES:
 TOTAL CUT = 80,053 BANK CUBIC YARDS
 TOTAL FILL = 75,099 BANK CUBIC YARDS
 TOPSOIL AT 6 INCHES OF DEPTH = 4,296 BANK CUBIC YARDS
 SPOIL = 658 BANK CUBIC YARDS
 DISTURBED AREA = 231,961 SQ. FT. OR 5.33 ACRES

PREPARED FOR:
 MARATHON OIL COMPANY
 P.O. Box 3128
 Houston, TX 77253
 5555 San Felipe
 Houston, TX 77056

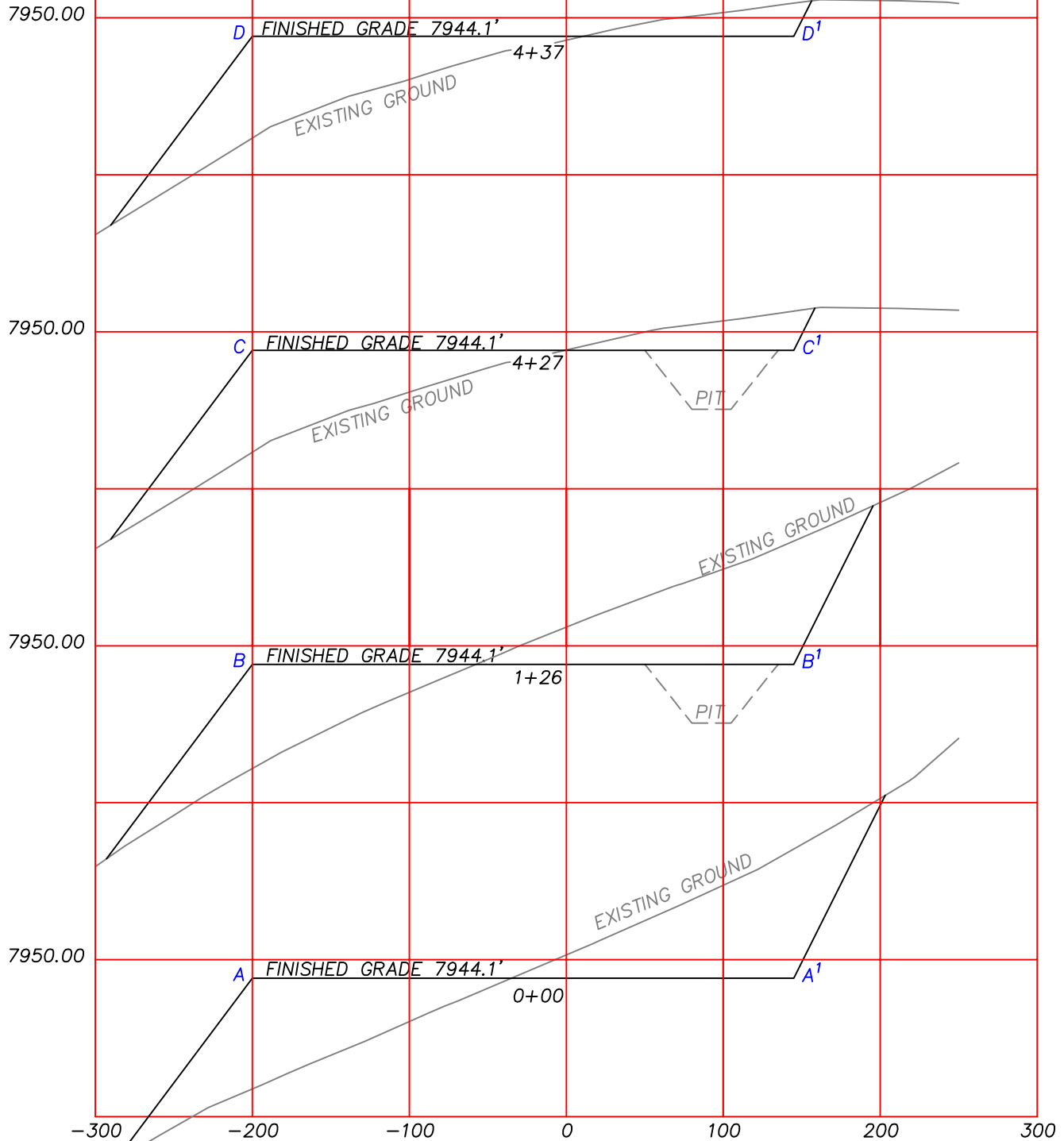
LOCATION:
 WELL 596-30A-V
 1091' FEL and 1568' FNL
 WITHIN THE NE/4 SECTION 30,
 T5S, R96W, 6TH PM.
 GARFIELD COUNTY, COLORADO
 SHEET 1 OF 4

WILLIAM H. SMITH & ASSOCIATES P.C.
SURVEYING CONSULTANTS

P.O. BOX 820
GREEN RIVER, WYOMING 82935

MARATHON OIL COMPANY
PAD 596-30A

550 EAST 2ND NORTH
PH. 307-875-3638
FAX. 307-875-3640



HORIZONTAL SCALE: 1"=100 FEET
VERTICAL SCALE: 1"=50.00 FEET

RESERVE PIT SIZE
301' X 85' X 15'
SLOPE = 2:1

RESERVE PIT CAPACITY
40,607 BBLs FULL
32,039 BBLs WORKING
CAPACITY WITH 2' FREE BOARD

JOB NO. 26099
07/13/2008 WHD
PAD 596-30A/PAD 596-30A.DWG

CUT SLOPES: 1:1
FILL SLOPES: 1.5:1
QUANTITIES:
TOTAL CUT = 80,053 BANK CUBIC YARDS
TOTAL FILL = 75,099 BANK CUBIC YARDS
TOPSOIL AT 6 INCHES OF DEPTH = 4,296 BANK CUBIC YARDS
SPOIL = 658 BANK CUBIC YARDS
DISTURBED AREA = 231,961 SQ. FT. OR 5.33 ACRES
DISTURBED AREA = 212,950 SQ. FT. OR 4.89 ACRES

PREPARED FOR:
MARATHON OIL COMPANY
P.O. Box 3128
Houston, TX 77253
5555 San Felipe
Houston, TX 77056

LOCATION:
PAD 596-30A
WITHIN THE NE/4 SECTION 30,
T5S, R96W, 6TH PM.
GARFIELD COUNTY, COLORADO
SHEET 2 OF 4